

TRUE OR FALSE

What do you know about the Italian Wolf?

Read the sentences and put a tick under **TRUE** if you think they are true or under **FALSE** if you think are false.



	Before reading		After reading	
	True	False	True	False
1. The wolf is a mammal				
2. It is a carnivore				
3. It has got yellow eyes				
4. It hunts in the morning				
5. It lives about 8 years				
6. It is a social animal				
7. It has got a strong smell				
8. It can run 65 km per hour				
9. It can weigh 60 kg				

The Italian Wolf “Canis lupus italicus”.

Read, check your hypothesis and give a title to the paragraphs:

Social life – Body – Diet – Reproduction - Communication - Habitat

.....
Wolves have got yellow **eyes** and a very good **sight**.

Most wolves **weigh** about 40 kilograms

They have got a **strong smell** and **hearing**

A wolf can run at a **speed of 65 kilometres** per hour.



.....
Wolves are **carnivores** and **hunt at night**.

They eat **medium sized animals** (Chamois, Deer, Wild Boar), **small animals** (hares, rabbits), **domestic animals** (sheep, calves).

.....
Wolves are **mammals**.

A female wolf can have **2 - 8 pups**. They weigh about 0,5 kg.

Wolves can live about 12 years.





.....

The wolf lives in **packs** of 4-7 individuals. In the pack there are a **dominant couple Alpha**, a subordinate **couple Beta** and other inferior wolves **Omega**.

.....

The wolf communicates through the **body language**. It **howls** in case of **danger**, to mark the territory or to communicate with the wolves.



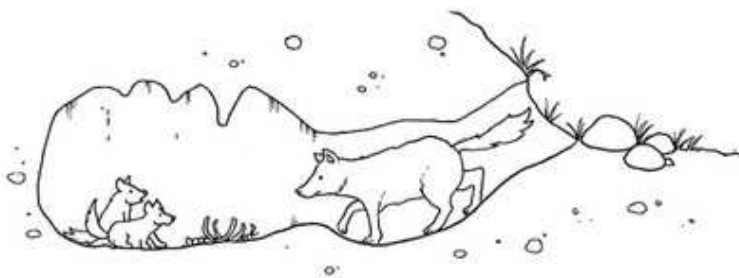
The leader (Alpha): ears and tail up.



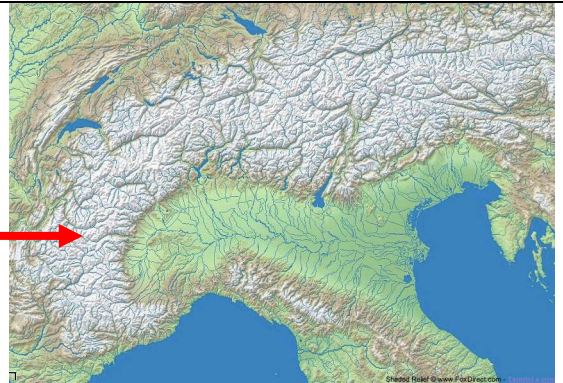
The 1st subordinate (Beta): ears up and tail down.



The 2nd subordinate: ears and tail down.



Wolves live in a **den** or in a **cave** or in a **log**.



They live in the **mountains** of **Chisone Valley** (Cozie **Alps**) in our Region, Piedmont - Italy